

# Lock Smart Systems

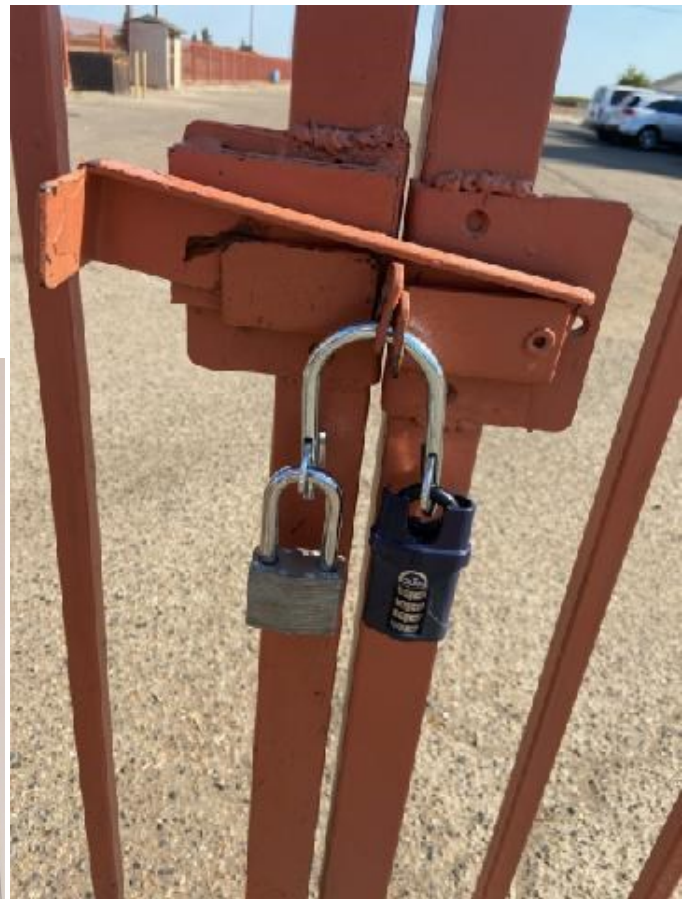
## Australia

ABN: 50120767528

Lock Smart Systems  
Australia



### Product Catalogue



# Gate Keeper Range

The Gate Keeper Range is the ideal product to stop the need for daisy chaining padlocks. The Gate Keeper will easily and conveniently allow 2 to 4 padlocks to be on a gate with all key holders being guaranteed that they can get access when needed.

## GM P2002



### **2 Lock Gate Keeper Locking System**

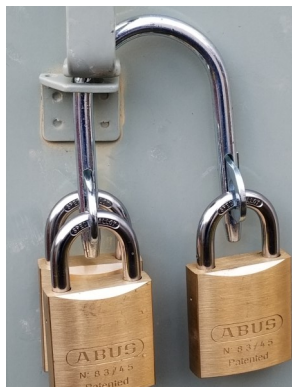
The GM P2002 will allow 2 padlocks to be used where shared access is required.

This pack includes 1 x U—Bolt and 2 x Single Links.

Dimensions:

Pack: 22 x 15.7 x 1.5cm

## GM P4004



### **2 and 3 Lock Gate Keeper Locking System**

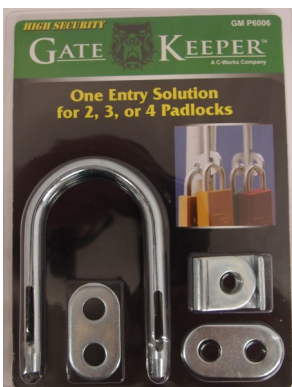
The GM P4004 will allow you to have either 2 or 3 padlocks used at a location where shared access is required.

This pack includes 1 x U—Bolt, 2 x Single Links and 1 x Double Link.

Dimensions:

Pack: 22 x 15.7 x 1.5cm

## GM P6006



### **2, 3 and 4 Lock Gate Keeper Locking System**

The GM P6006 is the most versatile Gate Keeper Pack. This pack will allow you to have either 2, 3 or 4 padlocks used at a location where shared access is required.

This pack includes 1 x U—Bolt, 2 x Single Links and 2 x Double Link.

Dimensions:

Pack: 22 x 15.7 x 1.5cm

## **GM SB2002**



### **2 Lock Gate Keeper Bar Locking System**

The GM SB2002 will allow 2 padlocks to be used where shared access is required. The straight bar means this can be used in areas that may have limited space.

This pack includes 1 x Straight Bar and 2 x Single Links.

Dimensions:

Pack: 22 x 15.7 x 1.5cm

## **GM SB4004**



### **2 or 3 Lock Gate Keeper Bar Locking System**

The GM SB4004 will allow 2 or 3 padlocks to be used where shared access is required. The straight bar means this can be used in areas that may have limited space.

This pack includes 1 x Straight Bar, 2 x Single Links and 1 Double Link

Dimensions:

Pack: 22 x 15.7 x 1.5cm

## **GM SB6006**



### **2, 3 or 4 Lock Gate Keeper Bar Locking System**

The GM SB6006 will allow 2, 3 or 4 padlocks to be used where shared access is required. The straight bar means this can be used in areas that may have limited space.

This pack includes 1 x Straight Bar, 2 x Single Links and 2 x Double Link

Dimensions:

Pack: 22 x 15.7 x 1.5cm

# Access Pins

## Access Pin with Managers Lock Out Link



### **Access Pin with Managers Locking Link**

The Access Pin with Manager Locking Link requires 2 people to unlock their padlock to gain access. Ideal as a lock out system for electrical panels or other areas of restricted access, that you do not want people to access without permission. Comes with 1 x Access Pin and 1 x Managers Lock Out Link.

Pin Sizes:

9.5mm diameter x76mm long (GM SP M6006)

11mm diameter x 76mm long (GM BPA M6006)

## Access Pin with Double Link



### **Access Pin with Double Link**

The Access Pin with Double Link is ideal when 2 padlocks are needed on an electrical panel or similar areas. This system will allow either person to safely and easily get access. Comes with 1 x Access Pin and 1 x Double Link.

Pin Sizes:

9.5mm diameter x76mm long (GM SP D3003)

11mm diameter x 76mm long (GM BPA D3003)

# Safety Lock Out

## GM ELEC01



### **Safety Lock Out**

The GM ELEC01 is a safety lock out system is designed for electrical panels but can be used on gates or anywhere else that you want to restrict access. The jaws to this lock can not be opened unless both padlocks have been removed meaning that it can not be accidentally opened.

Dimensions: 90 x 56 x 6mm

# Padlock Guard

## PG1



### **Padlock Guard**

The GM PG1 is designed to be used with the U Bolt Gate Keeper system to help protect padlocks from being cut from bolt cutters or saws. The powder coating cover of the Padlock Guard also helps prevent this from rusting.

Dimensions: 13.7 x 8.2 x 7.6cm

# Individual Items

## GM U1001



### **U Bolt**

The U Bolt is at the centre of the Gate Keeper range. This can be used with either single links, double links or a combination of both.

Dimensions: 105 x 70 x 8mm

## GM SB01



### **Straight Bar**

The Straight Bar is designed to be used in places that have limited room. This can be used with either single or double links or a combination of both.

The bar is 8mm in diameter and 101mm long.

## GM S2002



### **Single Link**

The Single Link can be used with either the Gate Keeper U Bolt or Straight Bar and will allow access by a single padlock.

Dimensions: 34 x 25 x 3mm

## GM S3003



### **Double Link**

The Double Link can be used with either the Gate Keeper U Bolt or Straight Bar and will allow access by one of two padlocks.

Dimensions: 47 x 25 x 3mm

## **GM M6006**



### **Managers Lock Out Link**

The Managers Lock Out needs to have both padlocks removed before it can be opened. This link can be used on either the Big Boy or standard access pins. This is ideal in areas where restricted access is needed.

Dimensions: 50 x 25 x 3mm

## **GM BPA1001**



### **Big Boy Pin**

The Big Boy Pin is Roto Blasted, hardened and plated so that it will last for decades. This pin was deigned for use by a major utilities company.

This pin is 11mm in diameter and 76mm long.

## **GM SP1001**



### **Standard Pin**

The Standard Pin is Roto Blasted, hardened and plated so that it will last for decades. This pin was deigned for use by a major utilities company.

This pin is 9.5mm in diameter and 76mm long.

# Graphite Powder

## GP1

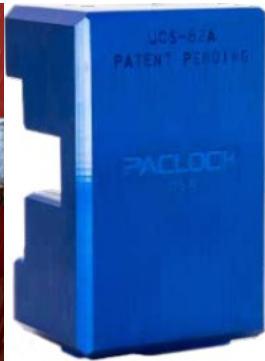


### **Graphite Powder**

35gm Tube of graphite powder. A perfect lubrication for padlocks or anywhere that dry lubrication is required.

# Transport Industry Locks

## CL1



### **Container Door Lock**

The CL1 is specifically designed to be a high security hidden shackle lock to go on container doors and keep freight safe and secure. The Container Door Lock comes with 2 keys.

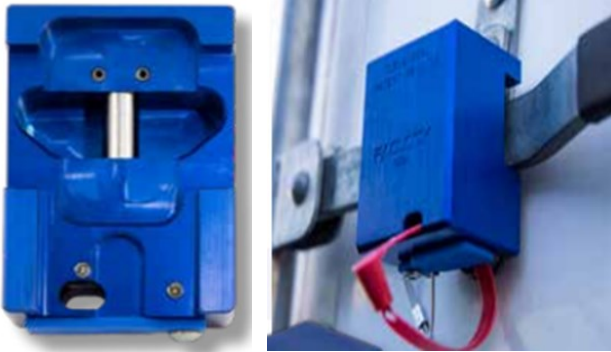
## TD1



### **Trailer Door Lock**

The TD1 is specifically designed to be a high security hidden shackle lock designed to go on semi trailers, container doors, trucks and almost anywhere with a swing door. The Trailer Door Lock comes with 2 keys.

## TD2



### **Trailer Door Lock—Seal**

The TD2 is the ideal lock when you need a high security lock with the security of a seal. This high security lock with a hidden hasp can not be opened unless the seal is removed first as it covers the lock cover. Seals are not included. The Trailer Door Lock comes with 2 keys.

# Tow Bar Locks

## TB1



### **Tow Bar Lock**

The TB1 is a high security lock that will keep your tow bar safe. The tow bar lock is 16mm in diameter and 106mm long. The Tow Bar Lock comes with 2 keys.

# Disk Locks

## DL1



### **Disk Lock**

The DL1 is a high security lock that can be used almost anywhere that a general purpose padlock is used. With a hidden shackle this lock makes attack from bolt cutters and saws extremely difficult. The Disc Lock is designed to fit the Hasps.

The Disk Lock comes with 2 keys.

## DL2



### **Cone Shaped Disc Lock**

The DL2 is a high security lock similar to the standard disc lock but comes with an additional security measure of having a cone shape on the front. This cone shape front and hidden shackle makes this lock difficult to drill into or break into via other ways. The Cone Shaped Disc Lock is designed to fit the Hasp.

The Cone Shaped Disc Lock comes with 2 keys.

## DL3



### **Chain Lock**

The DL3 is a convenient way to secure equipment gates or anything else. The chain lock comes with a backing plate so it can be mounted and a 90cm chain. The Chain Lock comes with 2 keys.

# Hasps

## H1



### **Full Hasp**

The H1 is a high security hasp design. This hasp is compatible with both the disc lock and the cone shaped disc lock. The hasps design allows for bolt heads to be counter sunk to reduce the chance of heads being cut off. The hasp comes with both front and backing plates. Plate size: 104 x 113.5mm

## H2



### **Half Hasp**

The H2 is a high security hasp design. This hasp is compatible with both the disc lock and the cone shaped disc lock. The hasps design allows for bolt heads to be counter sunk to reduce the chance of heads being cut off. The hasp comes with both front and backing plates. Plate sizes: 53 x 113.5mm and 40 x 113.5mm

# Security Seals

S1



## Plastic Seal

The S1 is a plastic security seal. This economically priced seal is perfect to accompany Trailer Door Lock— Seal or for other applications when a security seal is needed. The plastic seal is 412mm long and 7mm wide.

Seals are individually numbered.

S2



## Cable Seal

The S2 is a metal cable security seal. This economically priced seal is perfect to accompany Trailer Door Lock—Seal or for other applications when a security seal is needed. The cable seal is 300mm long and 5mm in diameter.

Seals are individually numbered.

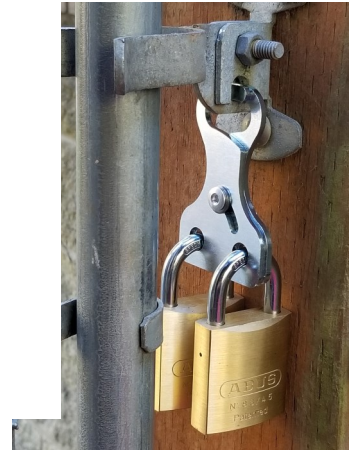
S3



## Bolt Seal

The S3 is a bolt seal. This economically priced seal is perfect for containers, truck doors or for other applications when a security seal is needed. The bolt seal is 84.8mm long and 8mm in diameter.

Seals are individually numbered.



## Contact Us

For more information on any of these products or anything else please contact us:

Lock Smart Systems Australia

ABN: 50120767528

Website: [www.locksmartsystemsaustralia.com.au](http://www.locksmartsystemsaustralia.com.au)

Email: [info@locksmartsystemsaustralia.com.au](mailto:info@locksmartsystemsaustralia.com.au)

Like us on Facebook

Mail: P.O. Box 541

Laverton

Victoria 3028

Lock Smart Systems  
Australia

